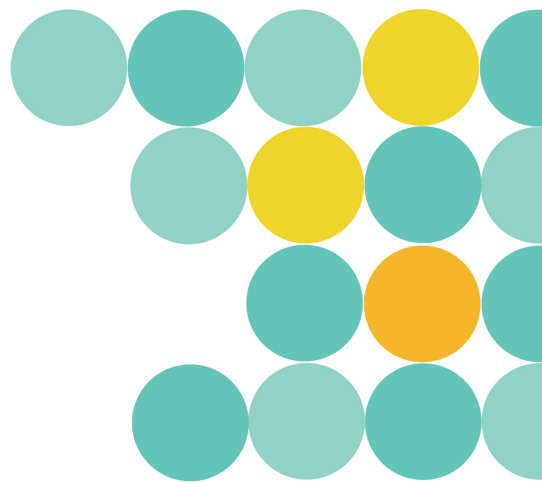
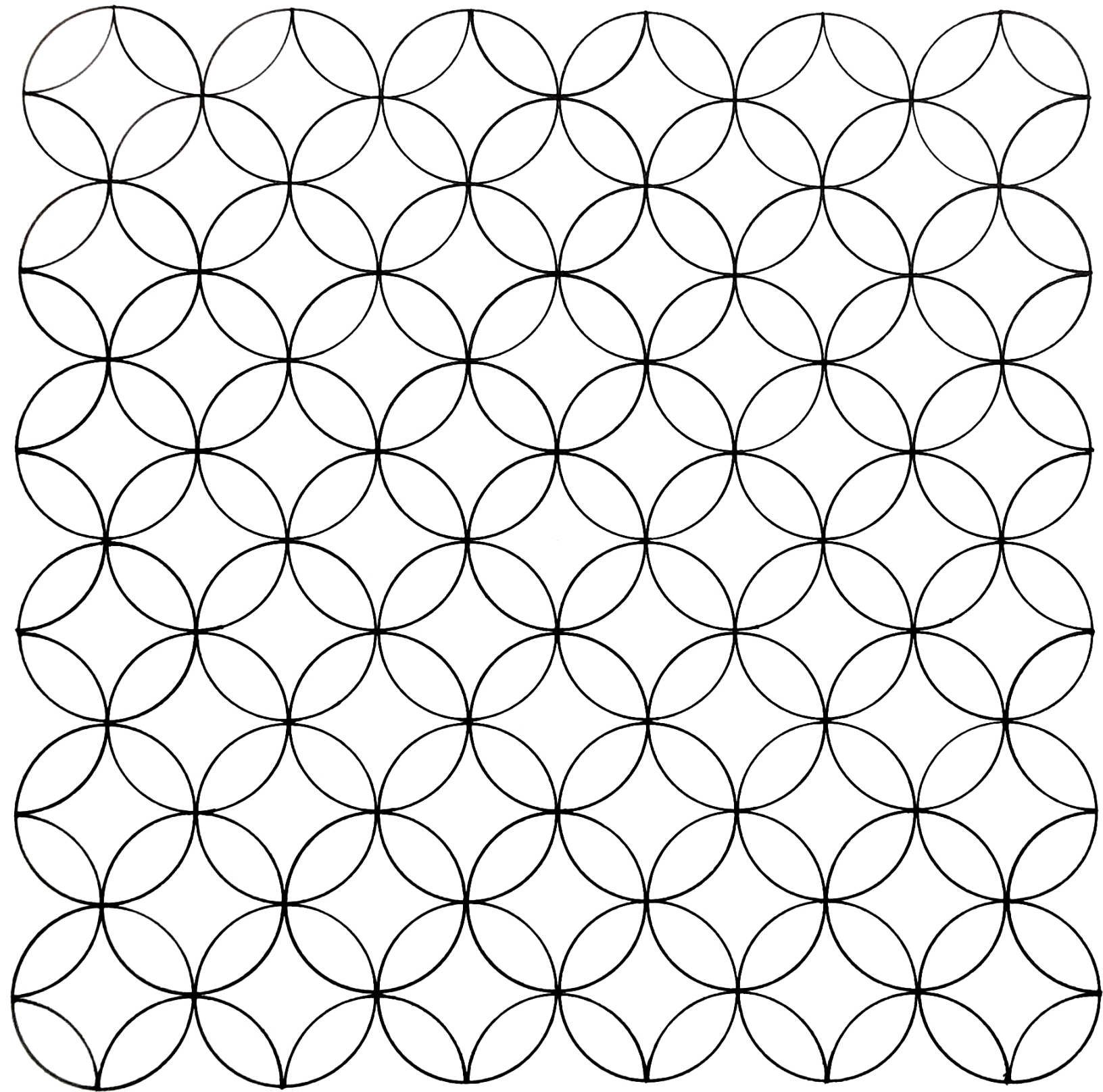
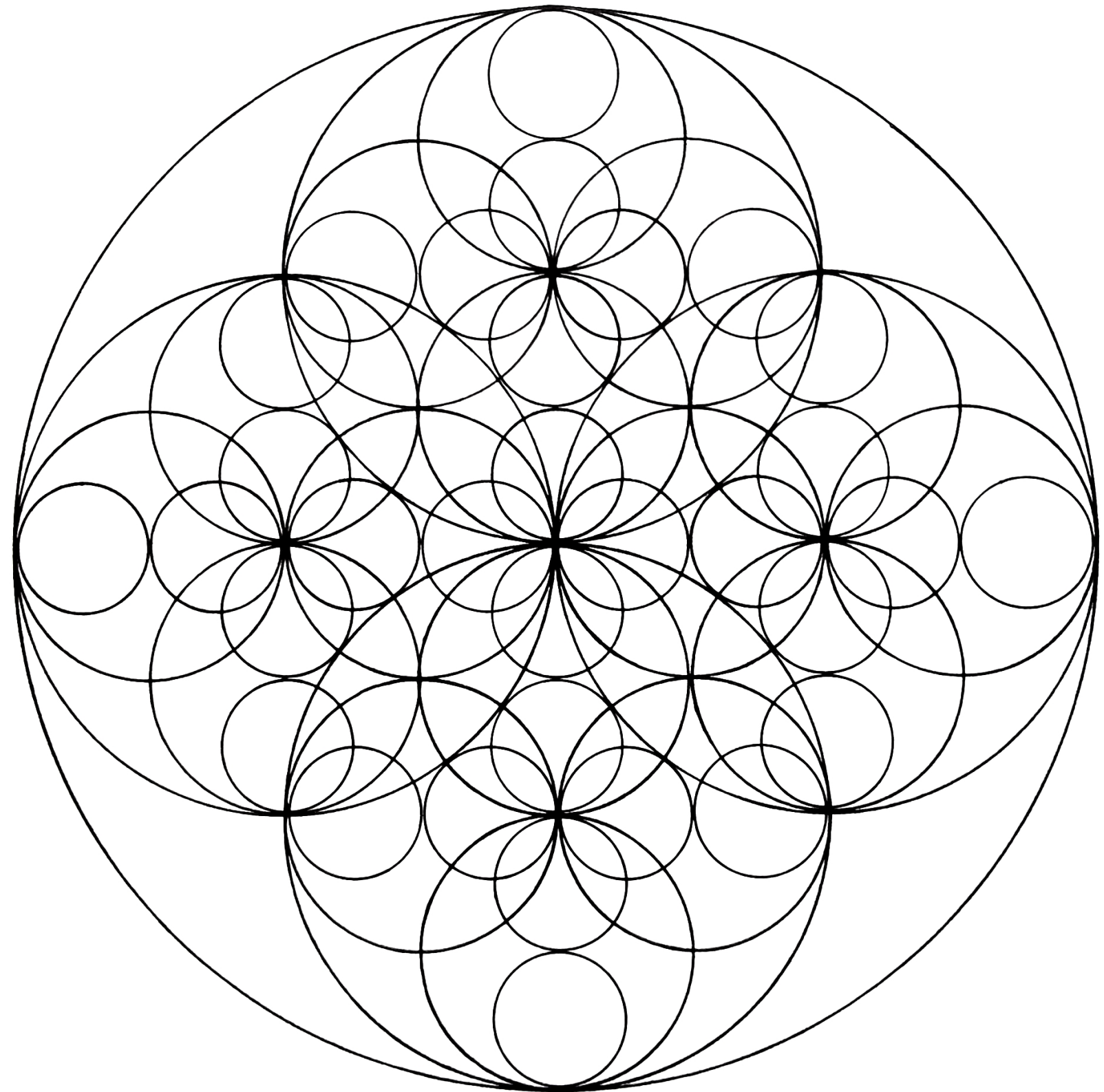
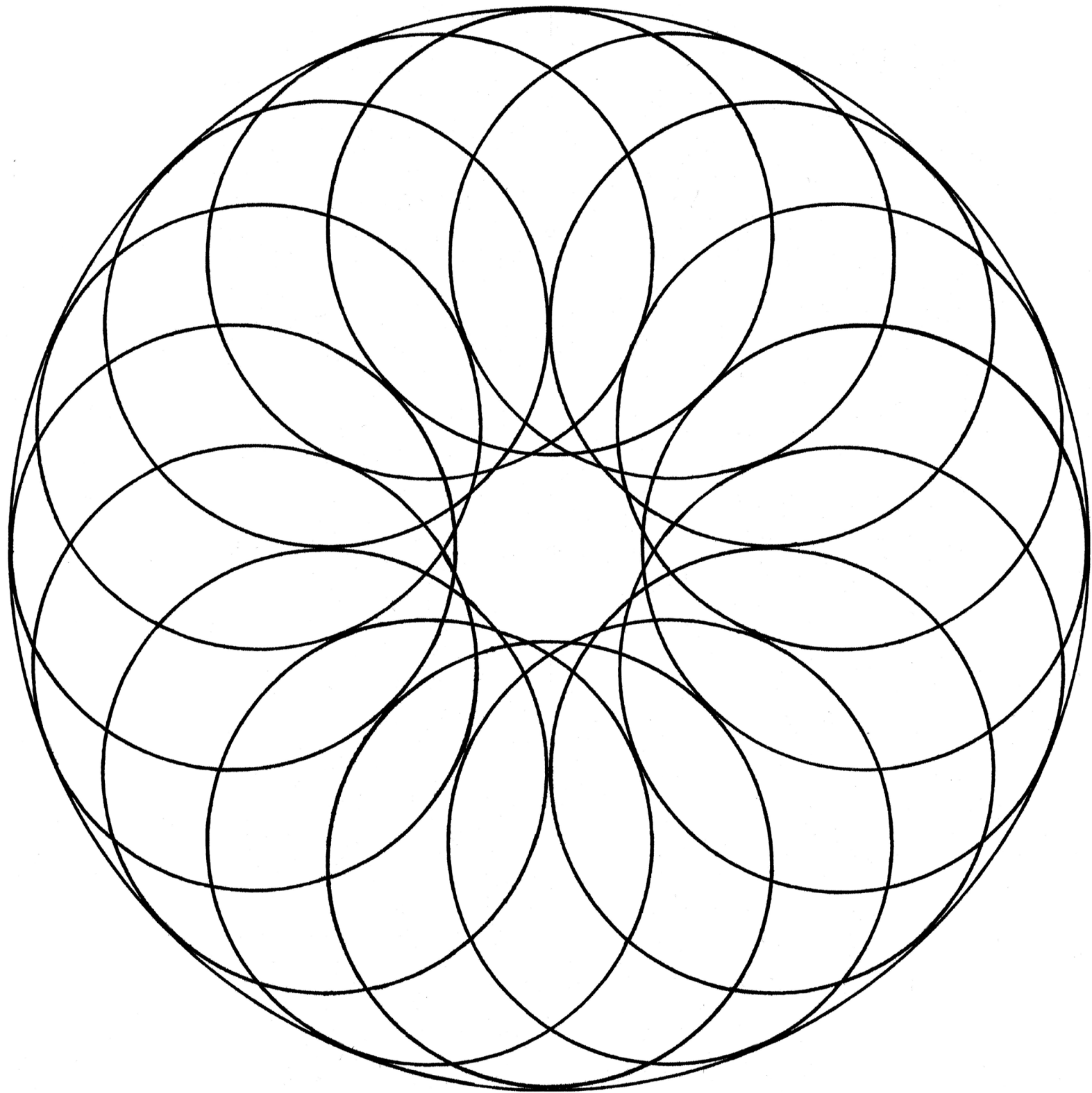


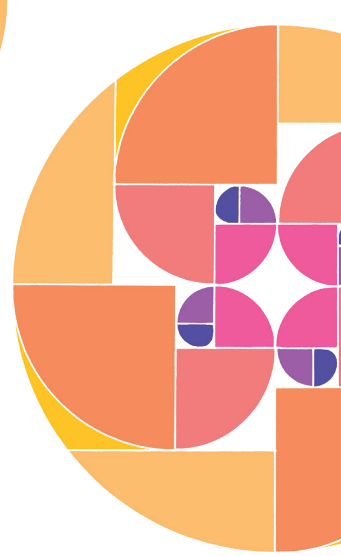
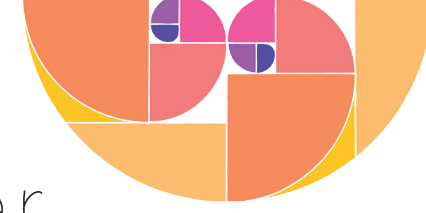
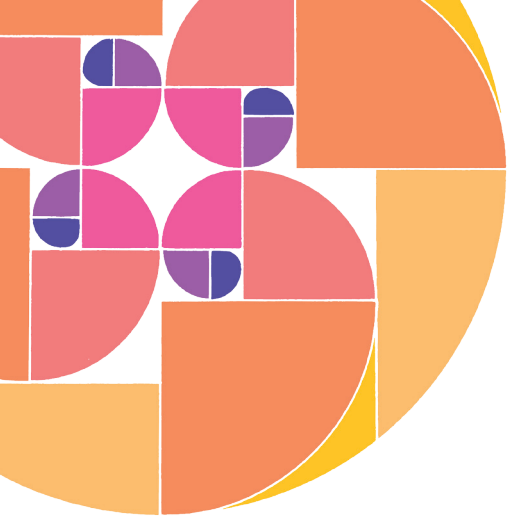
Perfect
CIRCLES



Two overlapping circles create a shield shape known mathematically as a 'lens'. Layering circles in regular patterns can create rows of pretty petal shapes, diamonds or starbursts.

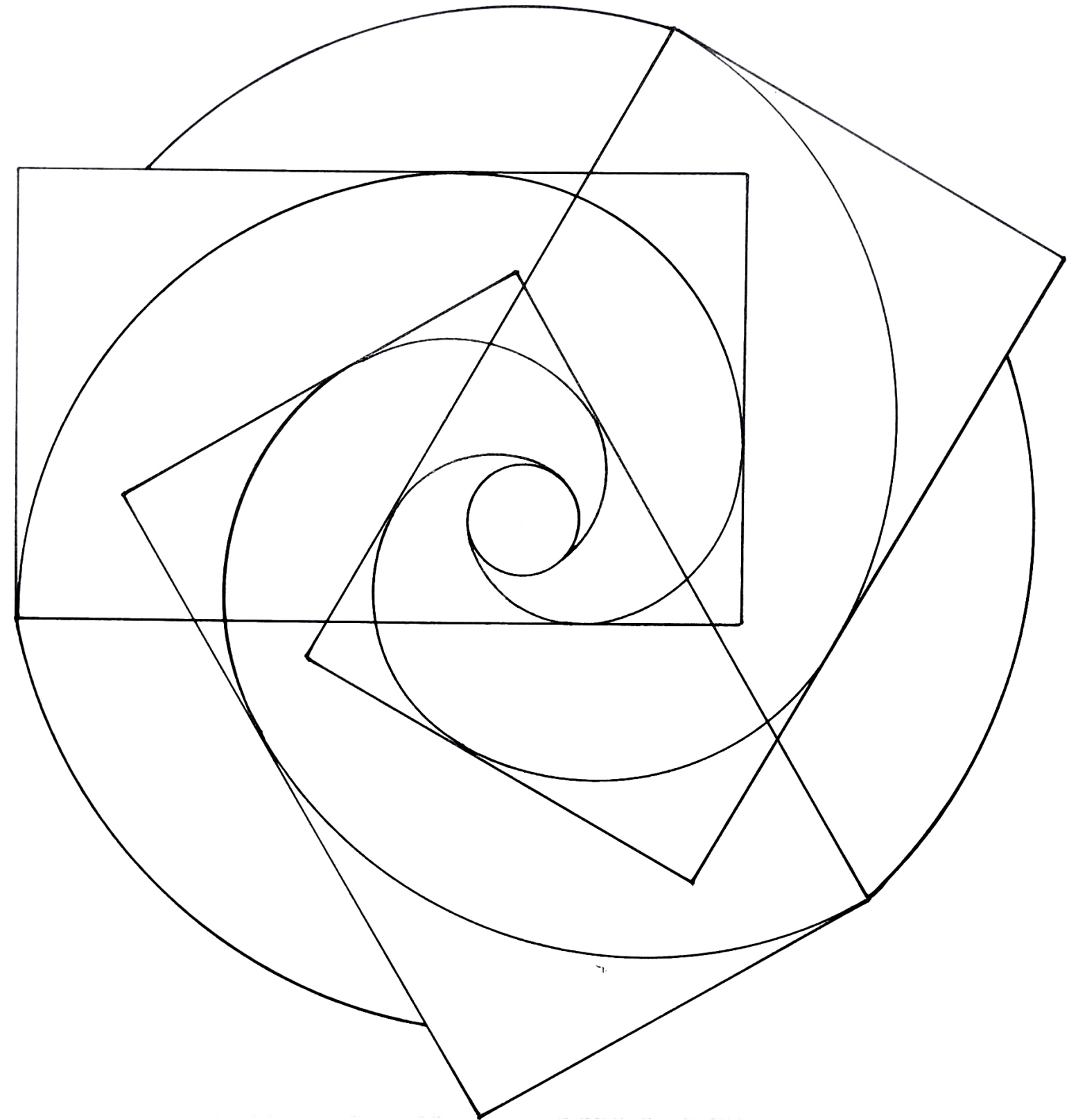
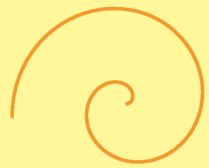


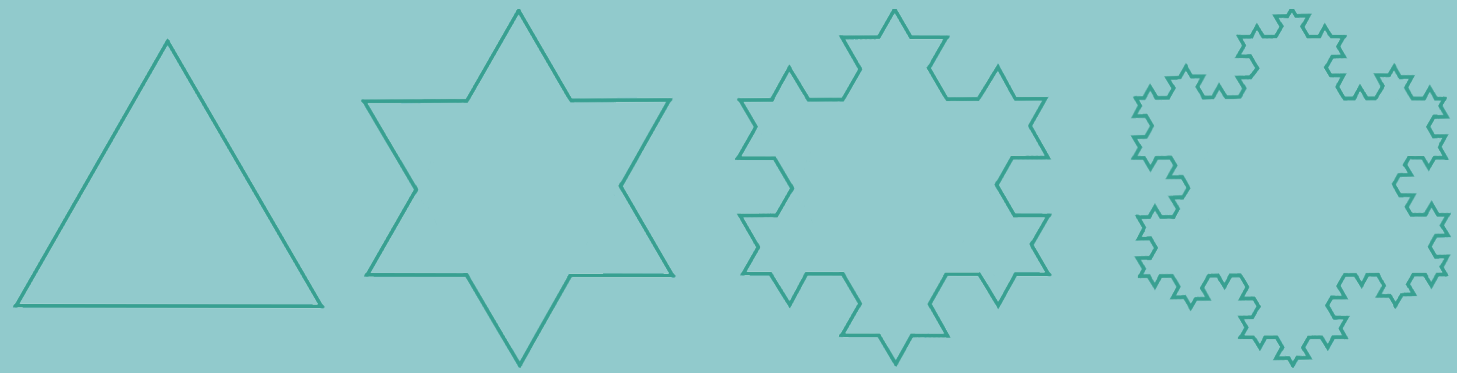




Super SPIRALS

A spiral is a pattern that is made by a line winding outwards from a central point. A spiral forms because the line gets further and further from the starting point with each rotation. Many things grow in a spiral pattern - look closely at a snail's shell or the seeds on the head of a sunflower.





Funky

FRACTALS

How can you grow a snowflake? Start with a simple triangle. Add a smaller triangle on each edge to make a star shape. Add an even smaller triangle on each edge of the star, and repeat an infinite number of times. The shape produced is known as a fractal. The special property of a fractal is that, no matter how much you zoom in, its pattern always looks the same.

