



TATTOO LEGENDS

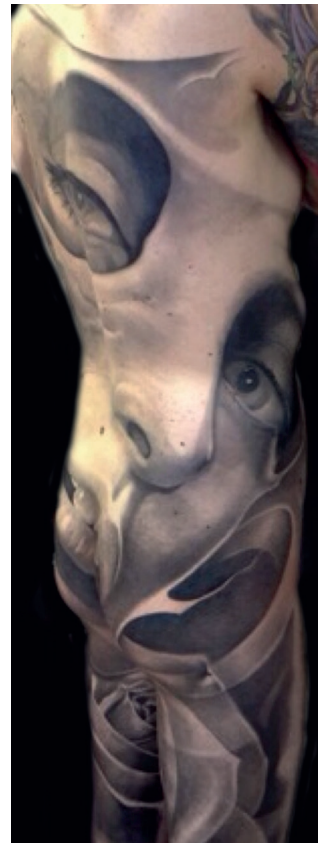
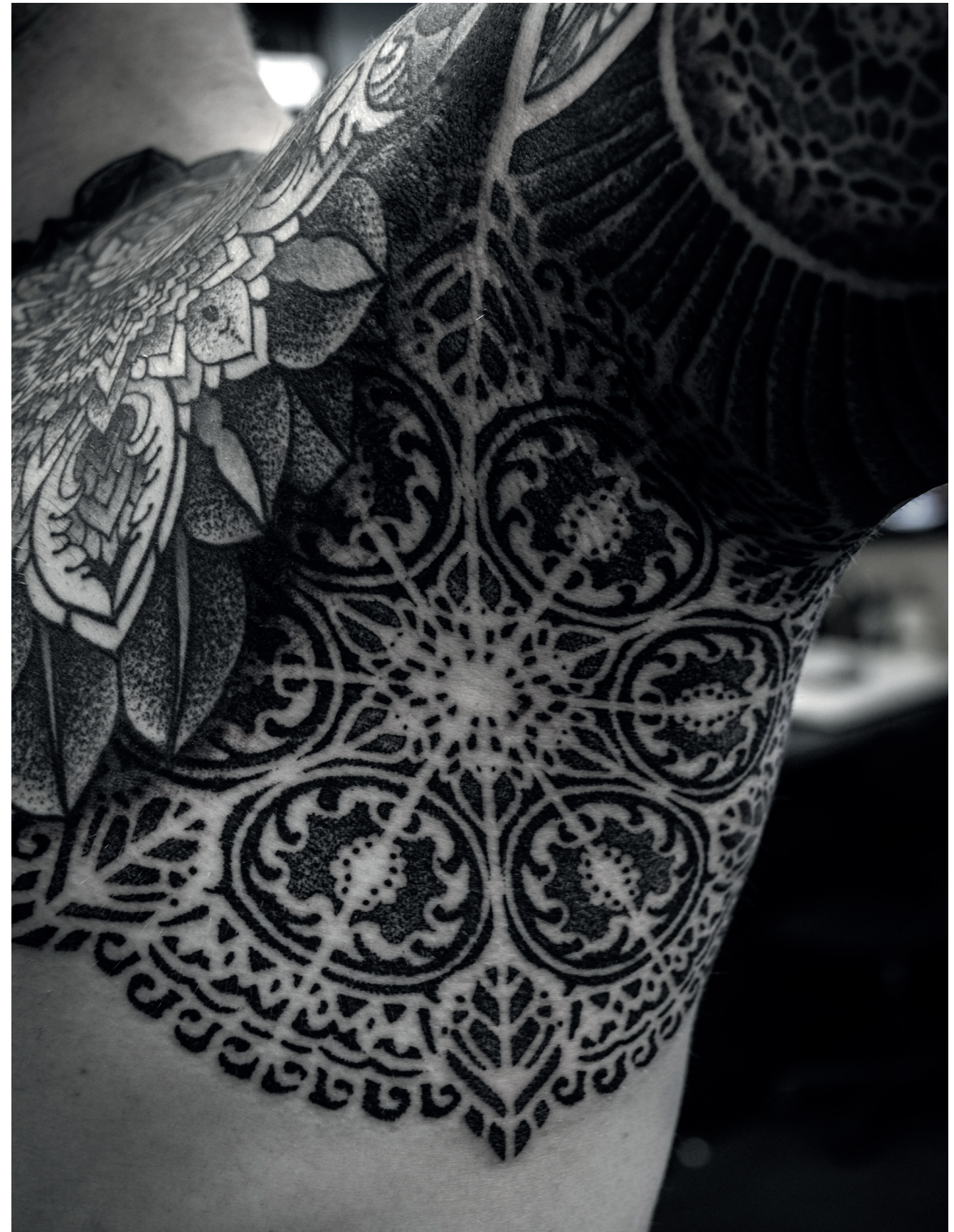
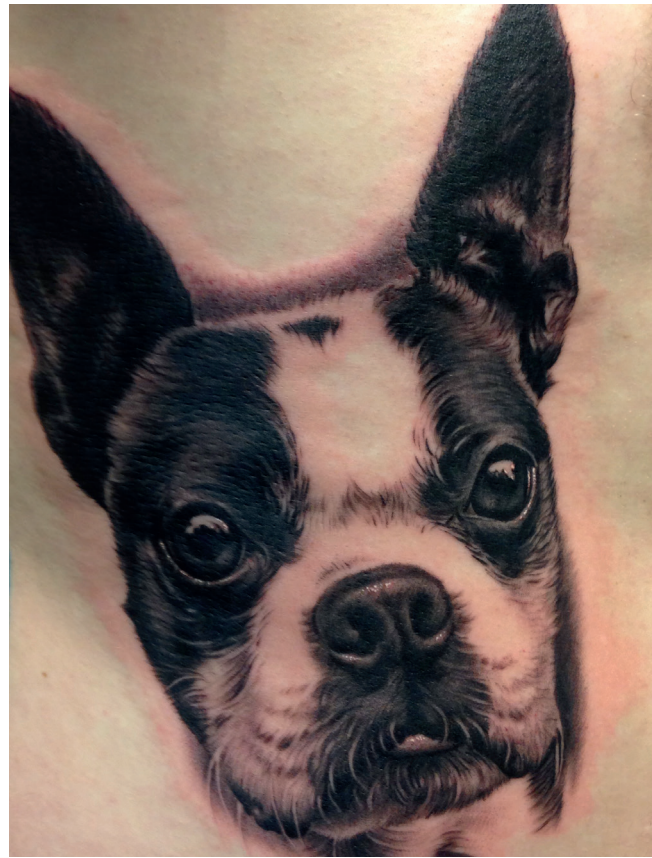
right: This photo shows a full-scale back piece with a sacred mandala as the centrepiece. This type of tattoo style is known as dotwork or pointilism - the main concept is created using dots not lines - it is a type process that requires immense skill and concentration to execute.

above: Eyes have always been found in modern-day tattoo - from the ancient Egyptian eye of Horus to the somewhat crude humour of a pair of eyes tattooed, one on each buttock. This particular eye shows both the immensely popular styles of realism and black and grey pigment use.

left: Man's best friend the dog has always been a staple of the tattoo artist's trade, from the cartoon bulldog (ever popular at times of conflict or major football tournaments) to depictions of Scooby Doo, Goofy, or Pluto and portraits of much loved pets. Here we see an example of the latter.

opposite page: Sacred mandala tattoos are highly popular in the tattoo world at present. The skill of the artist here was not only in the creation of the design but also in the execution of the design in the armpit - a particularly difficult place to tattoo.

below: The following four photos show a particularly fine example of a 'morphed' tattoo. The combination of a skull, rose and female face created on such a large scale make for a visually stunning piece of dermagraphic art.





BOB TYRRELL

opposite: Bob was a relatively late starter in the tattoo world. After fifteen years as a working musician with a factory job, he took a series of art classes and honed his drawing style. Tramp, the owner of Eternal Tattoos in Detroit, took him on as an apprentice after seeing some of this artwork. He then developed his tattoo style under the mentoring of Tom Renshaw. The werewolf is one of his sketches for a tattoo, which as yet hasn't been realised.